

### Applications

Industry complex  
Business park  
Local way  
Alley-way

### Certification

—

## Description

Unrivaled Efficacy 95 lm/W  
Nano-Silver Reflector with 97% Reflection Ratio  
Daylight Sensor / Built-in 20KV Surge Protection Device

## Specifications

Model Name	JET030	
Power Consumption	30W	
Light source	0.2W Mid Power LED Chips (Qty : 96 pcs)	
Correlated Color Temperature	5000K (3000K / 4000K / 5700K available)	
Luminous Flux *	2,850 lm	
Luminous Efficacy *	95 lm/W	
LED Driving Current *	50 mA	
Color Rendering Index	80 Ra	
Light Distribution	Type II-S / Type III-S	
BUG Rating	B1 – U0 – G1 (Backlight – Uplight – Glare)	
LED Chip Manufacturer	SAMSUNG	
Input Voltage	100 ~ 240 Vac	
Input Current	Max 0.4A (@100Vac)	
Power Factor	≥0.9 at Max load	
Frequency	50 / 60 Hz	
Surge Protection	Line-Line 20KV, Line-FG 20KV	
Driver Type	Constant Current (CC)	
Fixture & Driver Manufacturer	KMW INC. / Made in Korea	
Size ( L x W x H )	10.1 x 8.3 x 4.7 (inch)	257 x 210 x 118 (mm)
Weight (Driver included)	5.1 lb	2.3 Kg
Material	Body	Cast Aluminum
	Optic	Silver Coating Reflector
	Cover	Tempered Glass 3.2T (Clear)
Finish	Powder Coating	
IP Rating	IP66	
Operating Temperature	-22°F ~ 140°F	-30°C ~ 60°C
Life Time	50,000 Hours (@77°F / 25°C)	
Warranty	5 Years (12 hours usage per day)	

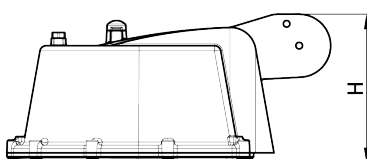
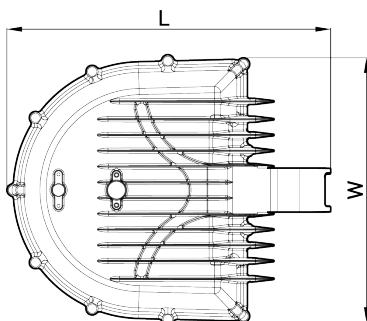
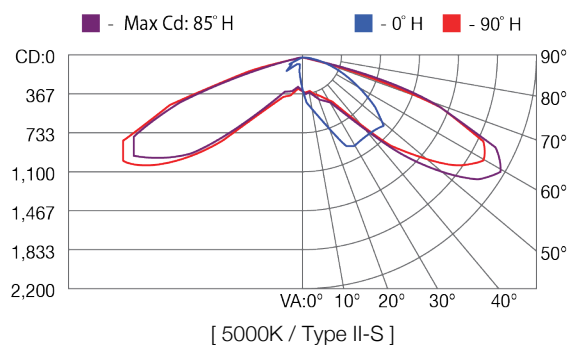
## Option

Control System	Sensor (Daylight)
Mounting Option	SUS Band / Horizontal Tenon Mount / Vertical Tenon Mount

\*Tolerance : ± 5%

## Photometry

See photometric .ies files for details.



## Control System (Optional)

### Daylight Sensor

Operating Voltage Range	5 Vdc (MAX. 6 Vdc)
Max. Power Consumption	40 mW (@5Vdc)
Detectable Illumination Range	9.2 – 92 fc (Default : 64 fc) / 100 – 1,000 lx (Default : 700 lx)
Output Signal	DC level

## Mounting Type (Optional)

See CAD .dwg files for

Junction Pole Mount (Horizontal) (Ø 60.5 mm)	Junction Pole Mount (Horizontal) (Ø 40 mm)	Junction Pole Mount (Vertical) (Ø 60.5 mm)	SUS Band

## Ordering Information

Order Code Usage : JET030-B50T2SASP60NNNG1NNNNKNC

JET	000	-	O	OO	000	O	O
	Power Consumption		Input Voltage	CCT (K)	Distribution Type	Control System	Surge Protector
	020=20W 030=30W 040=40W 050=50W		A=100~277V B=100~240V	30=3000K 40=4000K 50=5000K 57=5700K	T2S=Type II-S T3S=Type III-S	A=Daylight Sensor N=None	S=Yes
	000		000	OO	000	OO	OO
	Installation Type		Size	Fixture Color	Cable Type / Length	Option	Region
	J40=Junction Pole Mount (40mm) J60=Junction Pole Mount (60.5mm) JPV=Junction Pole Mount (Vertical) SSB=SUS Band		NNN=Not applicable	G1=Gray Powder	NNN=Not applicable	NN=None	KC=KC