

Safety precautions

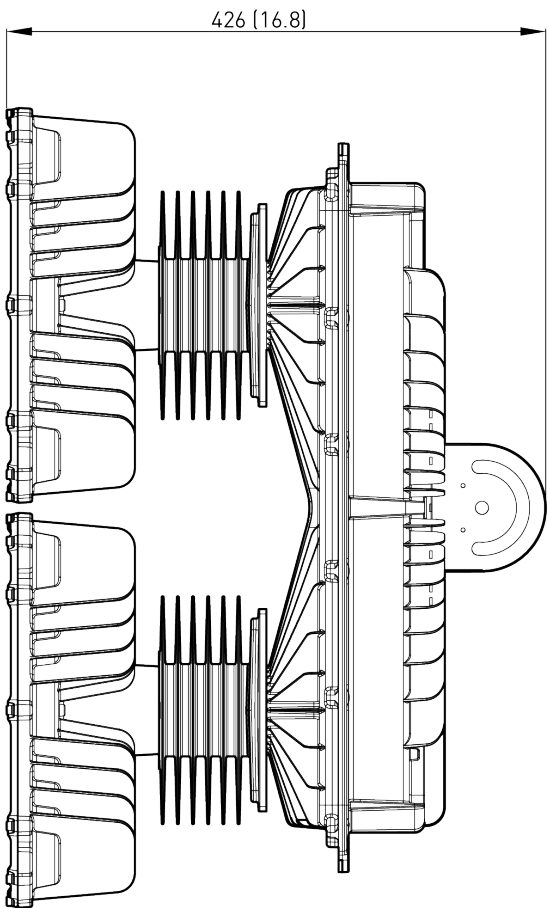
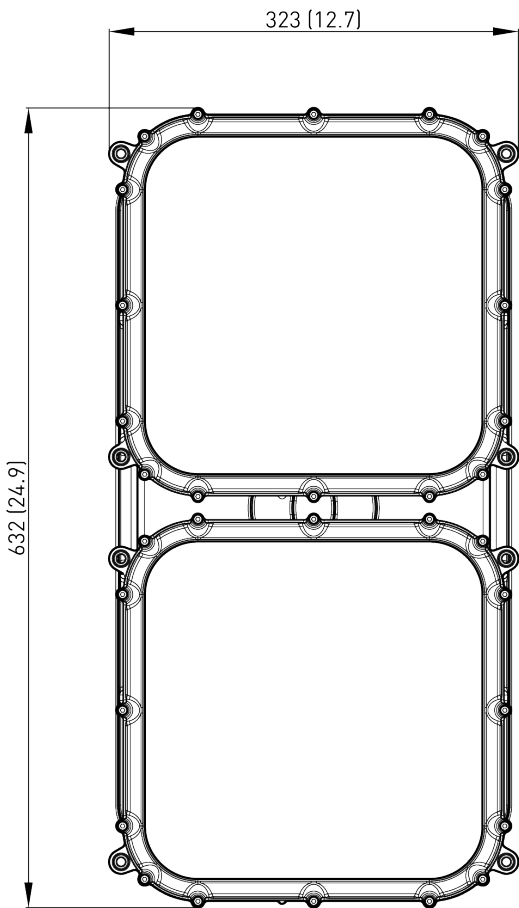
1. Electrical work must be performed by a qualified licensed electrician.
2. Disconnect or turn off power before installation or servicing.
3. Do not take apart or modify the product.
4. Do not drop the product or apply a strong impact to it.
5. The manufacturer or the seller do not bear liability for damage caused by inappropriate use or application.
6. Contact the manufacturer or the seller for inquiry when there is a problem with the product.

For luminaires with type Y attachments, the mounting instructions shall contain the substance of the following information for type Y attachments.

If the external flexible cable or cord of this luminaire is damaged, it shall be exclusively replaced by the manufacturer or his service agent or a similar qualified person in order to avoid a hazard.

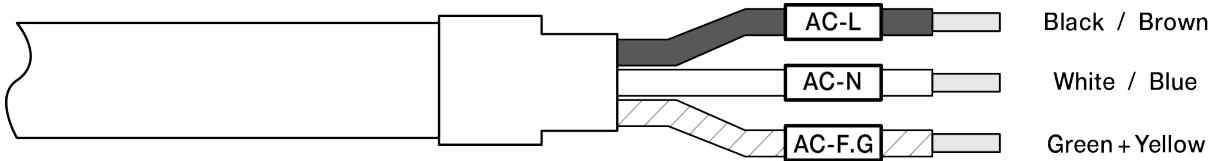
Product Dimension

mm (inch)



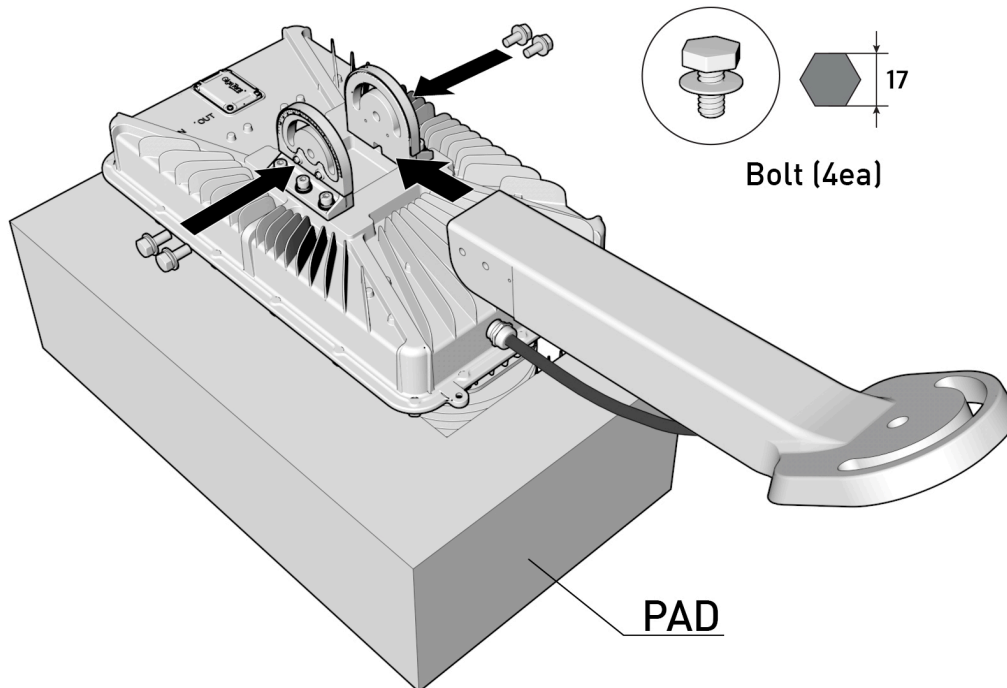
SUFA-X (800W / 1KW / 1.2KW)	Size (Bracket excluded)	323 x 632 x 426 (mm)	12.7 x 24.9 x 16.8 (inch)
	Weight (Driver Included)	25.0 Kg	55.1 lb

AC Power Cable



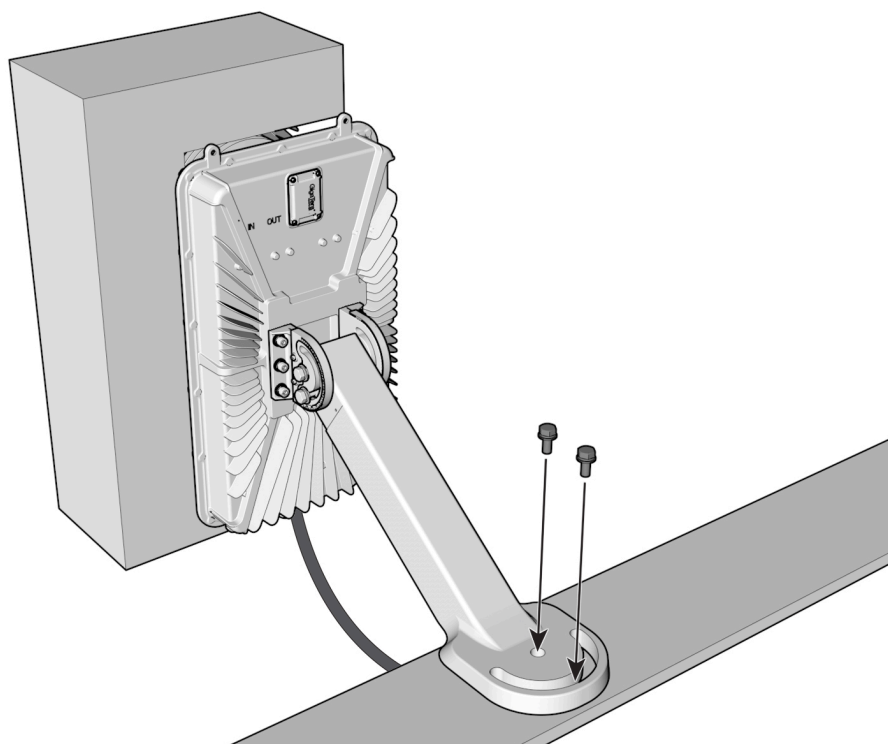
Installation Instruction

1



Assemble a bracket to fixture (Note : Do not remove PAD).
Bracket not provided. / To be sold separately.

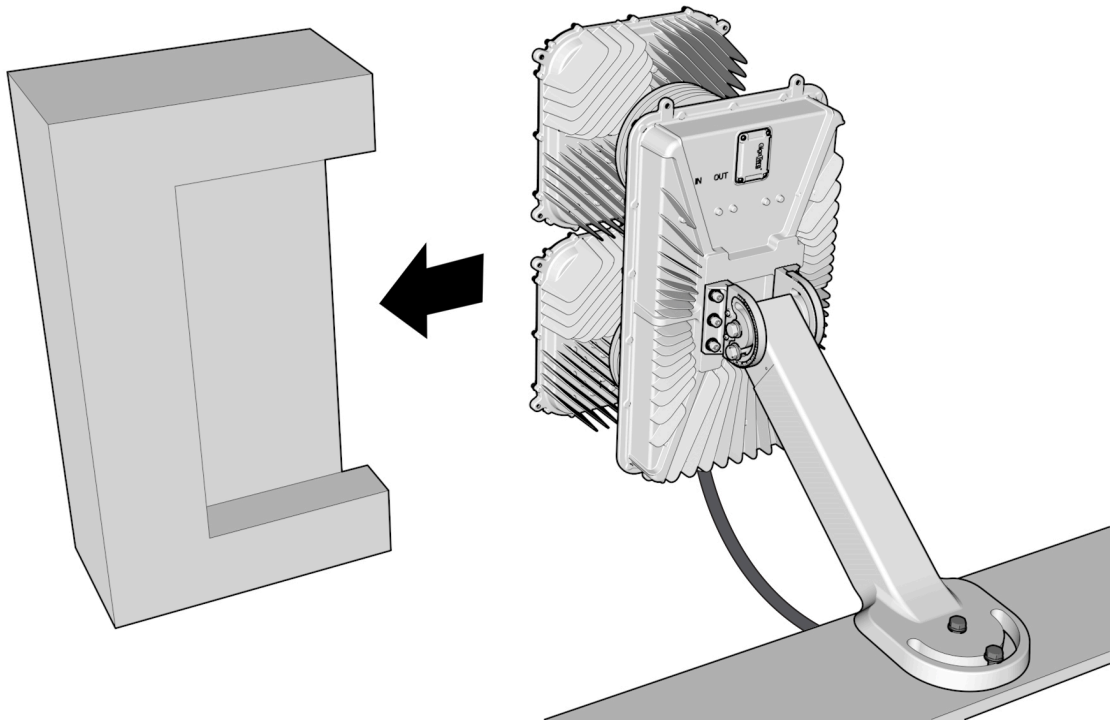
2



Install fixture (Bolts are not provided).

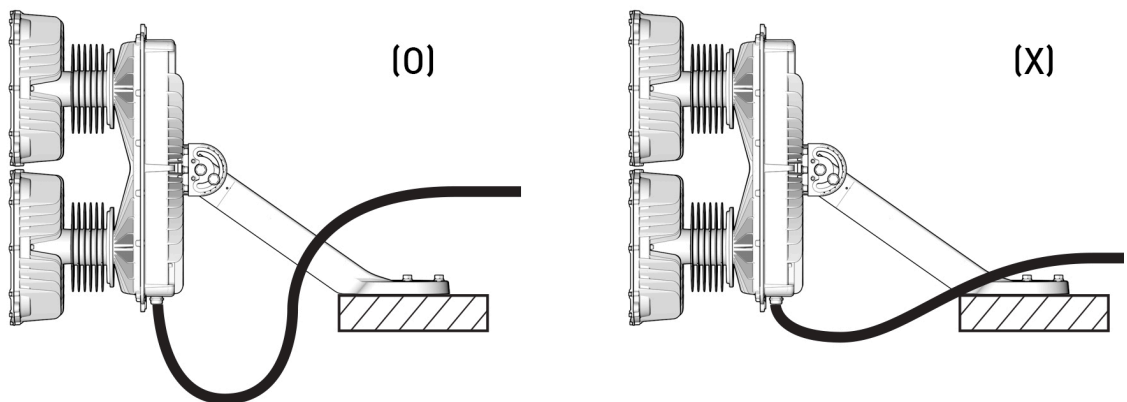
Installation Instruction

3



Remove the PAD.

4



Connect AC Power.

Secure proper length of AC cable considering movement of Fixture (refer to picture below).